



Lycée Privé

Emile Metz

Dommeldange | Differdange



Discover our secondary school!



Hi!

The LPEM presents itself



The Lycée Privé Emile Metz (LPEM) is a private secondary school providing the programmes of the Ministry of National Education. Pupil enrolment is free of charge.

The LPEM was founded in 1914 and is a school resolutely oriented towards the future. It combines modernity and tradition and has a rich pedagogical experience evolving constantly to provide its pupils with high quality facilities, teaching concepts and proven learning methods to prepare them for the professional world of tomorrow.

We can proudly claim to be the only Luxembourg secondary school with MINT certification.

Besides its pedagogical concept, the LPEM is a secondary school on a human scale where pupils, teachers and parents get in touch easily, especially since the teachers are available outside their class hours.

The supervision of the pupils is adapted to their needs thanks to optional supervised studies as well as support courses integrated into the timetable.

With some 500 pupils and moderate class sizes, pupils enjoy an optimal working environment.

In addition to the site in **Dommeldange**, the LPEM has been operating another site in **Differdange** since September 2023.

Differdange currently offers English-language vocational training and an integration class (CLIJAA-EN). The site in Differdange will continue to be expanded over the coming years so that, among other things, the English-language Smart Technologies class will also be offered there from September 2024.

CONTENTS

LPEM's main assets	4	Industrial and Maintenance Mechanic (DPMM)	21
MINT concept	4	Metal Constructor (DPSC)	22
LPEM's educational offer		Electro Technologies (DPET / DPETI)	23
General Secondary Education (ESG)	5	Cabinetmaker (DPEB)	24
Lower ESG grades	5	School life	25
Upper ESG grades	9	SePAS and SSE support	25
GIG Section	9	Aida – « Aide aux devoirs accompagnés »	25
GIN Section	10	SSE support "Léieren Léieren"	25
Full-time vocational training	11	Orientation Unit	26
Technician Diploma (DT)	11	European Parliament Ambassador School	26
Smart Technologies (TPST / TPSTI)		Makerspace EM@B03	27
& E-Controls (TPSTC / TPSTCI)	12	Media library	28
General Mechanics (TPMG / TPMGI)	13	Youth meeting room	28
Information Technology (TPIFI)	14	Cisco Networking Academy	29
Aircraft Mechanic (TCAM)	15	Oracle Academy	29
LPEM's educational offer (Dommeldange)	16	LPEM's Fairtrade policy linked to the Fairtrade Project	29
LPEM's educational offer (Differdange)	18	School canteen	30
Diploma of Professional Aptitude (DAP)	19	Information and enrolment	30
Cutting Machine Operator (DPMF / DPMFI)	20		



LPEM's Main Assets



- Free private school
- ESG from 7th to 1st grade allowing access to university studies
- Vocational training after 5th grade, both in Technician Training (DT) up to 1st grade and full-time training up to Diploma of Professional Aptitude (DAP) possible
- Modern workshops and laboratories
- A pleasant school for around 500 pupils
- Smaller class sizes
- MINT certified school
- Presence of school staff on site, even outside school hours
- Supervised study after school until 4.05 p.m.
- Tutoring in the timetable
- Direct connection to the bus network and Dommeldange railway station



MINT Concept



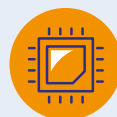
Mathematics



IT



Natural Sciences



Technology

The Lycée Privé Emile Metz is the only MINT certified school in Luxembourg. This means that the focus is on the core subjects of mathematics, IT, natural sciences and technology, as well as on interdisciplinarity.

At the same time, the Makerspace EM@B03 and the use of the iPad contribute to this new approach.

MINT = STEM (Science, Technology, Engineering and Mathematics)

LPEM'S EDUCATIONAL OFFER

GENERAL SECONDARY EDUCATION (ESG)

LOWER ESG GRADES

IN DOMMELDANGE

For the first three years of study in General Secondary Education (ESG) the LPEM offers:

- observation grades (7th),
- orientation grades (6th),
- determination grades (5G) and
- integration classes for young adults (CLIJAA-classes d'accueil pour jeunes adultes),

which enable the pupils to continue their studies or enter the world of professional life.

From the 7th grade onwards, all pupils in the lower grades are equipped with iPad tablets.





The 7th observation and 6th orientation grades provide pupils with a multipurpose basic education and deepens the knowledge acquired earlier.

The 5th determination grade prepares pupils either for further studies in higher grades or for access to vocational training.

The class teacher accompanies the pupil's school project from the 7th grade onwards. Together with the LPEM's Orientation Unit, the pupil's interests and skills in his/her professional project are taken into consideration.



The subjects taught in these first three years consist of three parts:

- mathematics, languages (German, French, Luxembourgish and English)
- natural and social sciences (physics, chemistry, biology, IT, history, geography)
- expression, orientation and promotion of talents (physical education, art education, music education, life and society education as well as options and workshop courses - at the LPEM these are the MINTTP and MINTLAB courses)

In case of learning difficulties, remedial measures are put in place to support pupils in their learning or to provide them with additional explanations in necessary subjects.



5AD (5th adaptation grade)

The LPEM completes its school programme for the lower grades by offering a 5th adaptation grade in addition to the 5th determination grade.

Completion of the 5th adaptation grade (5AD) enables pupils to begin vocational training within the school. The subjects taught correspond to the MENJE curriculum. The LPEM attaches great importance to preparing pupils well for training in the DAP's specialty of cabinetmakers, mechanics or electricians.

School enrolment takes place via application documents.



COP – VOCATIONAL ORIENTATION CLASSES

Students in vocational orientated COP classes receive individual support from teaching staff and are prepared for vocational training. Vocational orientation classes are often offered to students to help them explore and understand different professions, develop vocational skills and make informed decisions about their future careers.

During their training, students write their application letter and take part in internships

lasting several days or weeks to gain their initial experience in the professional world.

Participants are accompanied on their career path and receive answers to specific questions about their future career orientation.

The COP class is mainly used when pupils have chosen the wrong orientation path and can no longer be reorientated within the school year in question.

IFO – INDIVIDUAL SUPPORT AND ORGANISATION

During 7th and 6th grades, pupils learn the basics of everyday school life in IFO lessons. In particular, they learn how to organise their own time, organise school materials, prepare for exams and general learning. In addition, individual learning support is

offered in the main subjects of maths, French and German. IFO offers customised support for the learning needs of individual pupils and develops various learning strategies for them.



UPPER ESG GRADES

IN DOMMELDANGE

The LPEM offers on higher grades (4th, 3rd, 2nd and 1st) of General Secondary Education (ESG) the following sections:

- Engineering (4GIG, 3GIG engineering) and
- IT (2GIN and 1GIN IT).

GIG Section

The GIG section prepares pupils for higher scientific, engineering or university studies and for other professions in the technical and natural science fields. It is intended for pupils who have completed the 5th grade of the ESG and who wish to continue studying after graduation.

To be admitted to 4GIG, pupils must have passed a 5C or a 5G at an overall advanced level, with a high-level mark in the advanced mathematics course and a sufficient level mark in the IT course.

The emphasis is on mathematics, physics, IT, chemistry, and natural sciences, without neglecting the languages German, French and English as well as a solid general culture.





GIN Section



After successful completion of 3GIG, the LPEM offers interested pupils the opportunity to continue their studies in the higher classes of the IT section, 2GIN and 1GIN.

The GIN section is a technical, theoretical and practical training, with a strong emphasis on mathematics and IT.

To be eligible for 2GIN, pupils must have passed a 3GIG or hold a Technician Diploma (DT).

After successful completion of 1GIN, pupils can continue their studies in the fields of engineering at colleges or universities.

The languages taught are English with German or French as a second language.





FULL-TIME VOCATIONAL TRAINING

The orientation towards vocational training is made at the end of the 5th grade on the advice of the Class Council, according to the pupil's educational results and competences.

In the field of vocational training, the LPEM offers the Technician Diploma (DT) and the Diploma of Professional Aptitude (DAP).

TECHNICIAN DIPLOMA (DT)

The Technician Diploma (DT) gives the pupil direct access to professional life, but also to higher education by passing additional modules.

The technician's training differs from that of the DAP as it has a more in-depth and diversified profile of theoretical skills as well as a higher level of general culture.

The LPEM offers various technician training programmes:

- Smart Technologies (TPST and TPSTI),
with a specialisation in E-Controls
(TPSTC and TPSTCI), German and
English language
- Information Technology (TPIFI),
English language
- General Mechanics (TPMG and TPMGI),
German and English language
- Aircraft Mechanic (TCAM),
English Language

The duration of the technician's training is 4 years, organised with internship contracts (minimum of 12 weeks in total). To enter the course, the pupil must have passed a 5G.

After passing the DT, the pupil can continue his/her education in the higher classes of the ESG or take preparatory modules for higher technical studies.

The holder of the Technician Diploma can move into practical field work or more administrative work in professional life.

The Smart Technologies or General Mechanics Diploma gives access to the training of aircraft mechanic and to the AML licence.



Smart Technologies (TPST / TPSTI) & E-Controls (TPSTC / TPSTCI)

IN DOMMELDANGE AND DIFFERDANGE



In this training, the first two years deal with the theoretical and practical bases in electrotechnics and electronics.

The E-Controls specialisation in the 2nd and 1st grades and specific to the LPEM, develops IT and control skills as well as skills in automation of production lines.

Project work involves pupils working in groups and allows them to put their theoretical knowledge into practice.

The industrial sector offers interesting opportunities in a future- oriented field.

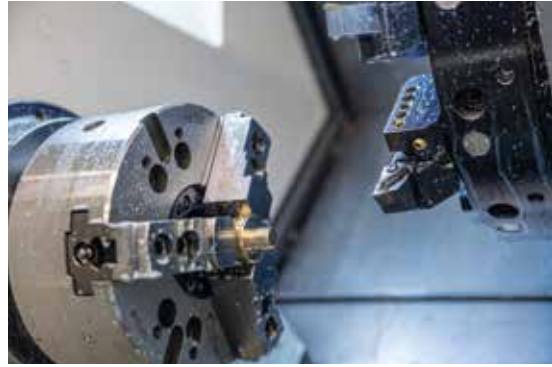
General Mechanics (TPMG / TPMGI)

IN DOMMELDANGE

The General Mechanics course is offered in German or English.

Admission to the English-language course is subject to an entrance test in English and mathematics.

During the project development, pupils apply the skills they have learned in the theoretical and practical modules. In the theoretical courses, they design projects and then manufacture the components using modern and high-performance machine tools.



The industrial sector offers interesting jobs either in a workshop or in a more administrative area.

New and only at the LPEM: Additional modules in aeronautical engineering are offered in classes 4TPMG(I) and 3TPMG(I).



Information Technology (TPIFI)

IN DOMMELDANGE AND DIFFERDANGE

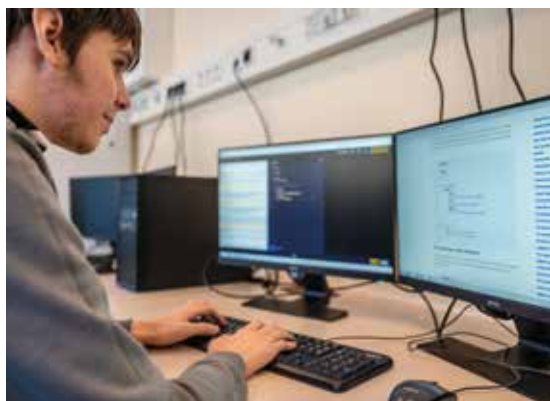


The English-language Information Technology course prepares students for a diploma in IT, offering a multitude of opportunities in the digital world.

Admission to the English-language course is subject to an entrance test in English and mathematics.

Pupils are trained in installation, programming, commissioning and maintenance of computers and computer networks. Group work on projects is an important learning method in the technician's training.

There are many opportunities for diploma holders in IT departments of companies, administrations and in companies that offer IT services.



Aircraft Mechanic (TCAM)

IN DOMMELDANGE

Our secondary school offers access to the training in aircraft mechanics (TCAM) leading to an AML (aircraft maintenance licence) under the following conditions:

- Technician Diploma in General Mechanics or Smart Technologies or
- Diploma of Professional Aptitude (DAP) as an Industrial and Maintenance Mechanic or in Electro Technologies and
- Apprenticeship contract with a Luxembourg airline company
- Very good knowledge of English (min. level B1)

The training is organised jointly by the school and the airlines:

- The theoretical part is provided by the LPEM
- The practical part is provided by the airlines in their workshops and hangars

Theoretical training covers aircraft materials, components and structures and is done with the help of modern software.

The training is in accordance with EASA (European Union Aviation Safety Agency) regulations and the AML licence is recognised in all EU countries.

The work of an aircraft mechanic involves the maintenance and repair of aircraft to ensure their safe operation.

It is a highly responsible job that requires continuous training throughout one's working life.



ÉTUDES SUPÉRIEURES
ET UNIVERSITAIRES

ÉTUDES TECHNIQUES
SUPÉRIEURES
BTS BREVET DE TECHNICIEN SUPÉRIEUR

DIPLÔME DE FIN D'ÉTUDES
SECONDAIRES GÉNÉRALES 

DT
DIPLÔME DE TECHNIQUE
(Formation en 4 ans)

Division technique générale

1GIN - Section informatique

2GIN - Section informatique

3GIG - Section de l'ingénierie

4GIG - Section de l'ingénierie

ENSEIGNEMENT SECONDAIRE
GÉNÉRAL (ESG)

Smart
technologies
& E-Controls
ST

Mécanique
générale
MG

Eng
Inform
Techn
IF

1TPSTC

1TPMG

1TP

2TPSTC

2TPMG

2TP

3TPST

3TPMG

3TP

4TPST

4TPMG

4TP

Upper grades

ORIENTA

5G - Cinquième de détermination

5AD - Cinquième de détermination

6G - Sixième de détermination

7G - Septième de détermination

Lower grades

ENSEIGNEMENT SECONDAIRE GÉNÉRAL (ESG)

NATIONAL OFFER

MELDANGE



QUES
S
- BREVET DE MAÎTRISE

BREVET DE MAÎTRISE
2^e - 1^{re} DT (admission sur dossier)

IRES
ÉGIME CONCOMITANT
(TCAM - anglais)

HNICIER
(s)



DAP
DIPLOME D'APTITUDE PROFESSIONNELLE
(Formation en 3 ans)



ish speaking classes

ation ology FI	Mechanics MGI
PIFI	1TPMGI
PIFI	2TPMGI
PIFI	3TPMGI
PIFI	4TPMGI

Menuisier ébéniste EB	Electro Technologies ET	Mécanicien d'usinage MF	Mécanicien industriel et de maintenance MM	Constructeur métallique SC
DP3EB	DP3ET	DP3MF	DP3MM	DP3SC
DP2EB	DP2ET	DP2MF	DP2MM	DP2SC
DP1EB	DP1ET	DP1MG - Mécanique générale		

FORMATION PROFESSIONNELLE À PLEIN TEMPS

INTATION

ième d'adaptation

CLIJAA - EN - Classes d'intégration pour jeunes adultes en anglais

ème d'orientation

ème d'observation

ONDAIRE GÉNÉRAL (ESG)

LPEM'S EDUCATIONAL OFFER

IN DIFFERDANGE

ÉTUDES TECHNIQUES SUPÉRIEURES

BTS BREVET DE TECHNICIEN SUPÉRIEUR
- BREVET DE MAÎTRISE

BREVET DE MAÎTRISE

2^e - 1^{re} DT (admission sur dossier)

DT DIPLOME DE TECHNICIEN

(Formation en 4 ans)



DAP DIPLOME D'APTITUDE PROFESSIONNELLE

(Formation en 3 ans)



Smart
technologies
& E-Controls
ST

Information
Technology
IFI

English speaking classes

1TPSTCI⁽³⁾

1TPIFI⁽¹⁾

2TPSTCI⁽²⁾

2TPIFI

3TPSTI⁽¹⁾

3TPIFI

4TPSTI

4TPIFI

Electro
Technologies
ET

Mécanicien
d'usinage
MF

English speaking classes

DP3ETI⁽¹⁾

DP3MFI⁽¹⁾

DP2ETI

DP2MFI

DP1ETI

DP1MFI

FORMATION PROFESSIONNELLE À PLEIN TEMPS

ORIENTATION

CLIJAA - EN - Classes d'intégration pour jeunes adultes en anglais

ACCU - Classe d'accueil

ENSEIGNEMENT SECONDAIRE GÉNÉRAL (ESG)

⁽¹⁾2025/2026

⁽²⁾2026/2027

⁽³⁾2027/2028

Upper grades

Lower grades



DIPLOMA OF PROFESSIONAL APTITUDE (DAP)

The Diploma of Professional Aptitude (DAP) is strongly oriented towards practical work in the workshop, while providing a solid theoretical basis for mastering complex machines and technical processes.

The entry requirements are:

- 5G passed at generally basic level
- 5AD passed with strong mathematics level
- 5P with 45 modules passed, including 8 in mathematics

The duration of the courses offered at the LPEM is 3 years full-time with a work internship (minimum of 12 weeks during the course).

The LPEM offers the following training courses:

- Industrial and Maintenance Mechanic (DPMM)
- Cutting Machine Operator (DPMF)
- Metal Constructor (DPSC)
- Electro Technologies (DPET)
- Cabinetmaker (DPEB)

The DAP gives access to the job market as a qualified employee.

Industrial companies, the craft industry and the technical departments of administrations offer good professional prospects.

Under certain conditions, the pupil can follow up with a technician's training (DT) in the same field.

The master craftsman diploma allows the pupil to advance his/her personal career and gives the right of establishment.



Cutting Machine Operator (DPMF / DPMFI)

DPMF IN DOMMELDANGE / DPMFI IN DIFFERDANGE

The cutting machine operator is mainly concerned with the production of precision metal parts, which he/she produces based on technical drawings and with high-performance numerically controlled machine tools.

The adjustment of tools and machines and the optimization of manufacturing processes are essential.

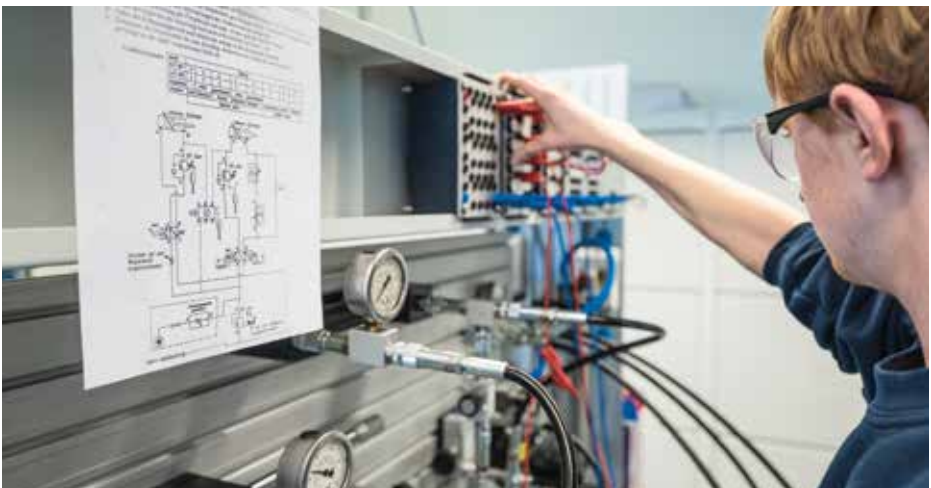
Interesting jobs are available in specialised companies and in the manufacture of work pieces.



Industrial and Maintenance Mechanic (DPMM)

IN DOMMELDANGE

The industrial and maintenance mechanic is mainly involved in the maintenance and repair of machines and production facilities consisting of mechanical, hydraulic, pneumatic, and electronic components.



Metal Constructor (DPSC)

IN DOMMELDANGE

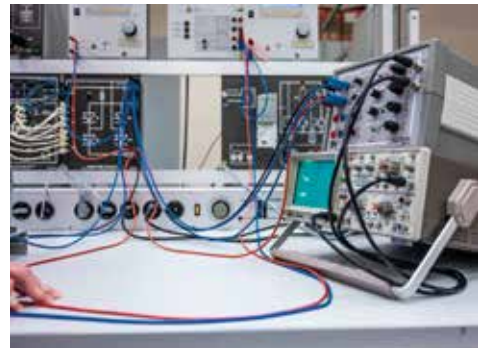
The metal constructor designs, prepares, and builds metal structures for buildings (frames, doors, stairs) and welded constructions (e.g. furniture, machine frames).

The metal constructor works in a specialised company, in a workshop or on site.



Electro Technologies (DPET / DPETI)**DPET IN DOMMELDANGE / DPETI IN DIFFERDANGE**

The graduate in Electro Technologies is responsible for the planning, installation and maintenance of electrical and electronic installations in buildings, on industrial production lines and in energy distribution systems.



Cabinetmaker (DPEB)

IN DOMMELDANGE

The cabinetmaker makes furniture using manual and industrial CNC machines.

Making a piece of furniture is creative work - designing and sketching, choosing wood and fittings, treating the wood surfaces to protect them, and assembling the furniture.

The local joineries offer good prospects for young graduates.



SCHOOL LIFE

SePAS AND SSE SUPPORT

The Psycho-social and School Support Service (SePAS) team provides psychological, personal and social guidance to pupils.

The SePAS service also supports pupils in difficult school, psychological or family situations and assists teachers in dealing with pupils with educational difficulties and special needs.

The Socio-Educational Service (SSE) is integrated into the SePAS. The development of pupils' personal and social skills, educational support, prevention of school drop-out and violence, and assistance to pupils in difficult life situations are among the main tasks of the SSE.

AIDA – « AIDE AUX DEVOIRS ACCOMPAGNÉS »

Pupils in the lower classes of the ESG can access the help of AIDA between 2.35 p.m. and 4.05 p.m. The pupils enrol in the courses on their own initiative and receive individual support with their homework. AIDA takes place in the school's own media library.

SSE SUPPORT "LÉIEREN LÉIEREN"

During supervised studies or at the SePAS, the members of the SSE accompany the pupils to teach them how to manage their time and guide them in the acquisition of learning techniques. Pupils learn how to prepare their homework and test papers in the best possible conditions.



ORIENTATION UNIT

In order to better support and guide the pupils of the Lycée Privé Emile Metz in all questions and procedures relating to educational and professional orientation, a Orientation Unit has been set up.

In collaboration with internal and external partners, the Lycée Privé Emile Metz Orientation Unit assists each pupil in developing a personalised training plan leading to an appropriate educational orientation that best synthesises each pupil's personal identity (social and emotional skills, creativity, communication and critical thinking as well as a sense of initiative and entrepreneurial spirit) and educational results.

Numerous visits and interviews with the guidance teachers complete this offer.

EUROPEAN PARLIAMENT AMBASSADOR SCHOOL

As a European Parliament Ambassador School since 2018, the LPEM focuses on the development and transfer of knowledge about the European Union and its institutions. The project involves every year a new group of pupils, called junior ambassadors, who develop their democratic skills and critical thinking during extracurricular activities.





MAKERSPACE EM@B03

The Makerspace EM@B03 is open during the lunch break every day of the week. The pupils can conceive, create and realise projects together with the teaching staff and practical instructors using 3D printers, laser cutters, computers and the materials they need. Pupils can also attend workshops. The EM@B03 has become a **source of ideas** for many MINT activities.





MEDIA LIBRARY

After the floods in 2021, the media library was completely renovated and shone in new splendour in 2023. Between 7 a.m. and 5 p.m., pupils can retreat there and study in peace, are supported in their activities by members of the SSE (Socio-Educational Service) and have access to PCs to complete their class assignments.

The media library can also be reserved for group work(s) within the classes during school hours.



YOUTH MEETING ROOM

In the youth meeting room, pupils can meet up during breaks or class supervision. The youth meeting place gives young people the opportunity to meet up in their free time, socialise and take part in various activities, such as table football or darts tournaments.





The LPEM has been officially designated as a Cisco Networking Academy in 2019 and can now offer training courses with official Cisco certification (CCNA) in its laboratories, which are equipped to meet current and future requirements.



As of the 2020/2021 school year, the LPEM has been approved by Oracle. This means that our pupils can benefit from a course platform and have at the same time access to Oracle Application Express.

LPEM'S *FAIRTRADE* POLICY LINKED TO THE *FAIRTRADE* PROJECT

The Lycée Privé Emile Metz greatly appreciates the educational projects of the Fairtrade Lëtzebuerg organisation and wishes to participate in the Fairtrade School Programme, which already includes more than twenty schools in Luxembourg.



This approach fits well with the goals of the LPEM to support equity and sustainable development efforts within its school community.



SCHOOL CANTEEN

The school canteen offers a hearty breakfast from 7.30 a.m. onwards.

During the morning break, pupils can enjoy a variety of sandwiches and pastries.

At lunchtime, a complete menu at moderate cost, cold plates and salads prepared on the spot by the LPEM kitchen team, are on the menu. Fresh, regional or local products are used as much as possible in the preparation of the dishes.



INFORMATION & ENROLMENT

lpem.lu

Follow us



lyceepriveemilemetz



Lycée Privé Emile Metz



Lycée Privé Emile Metz



Site in Dommeldange



Site in Differdange

